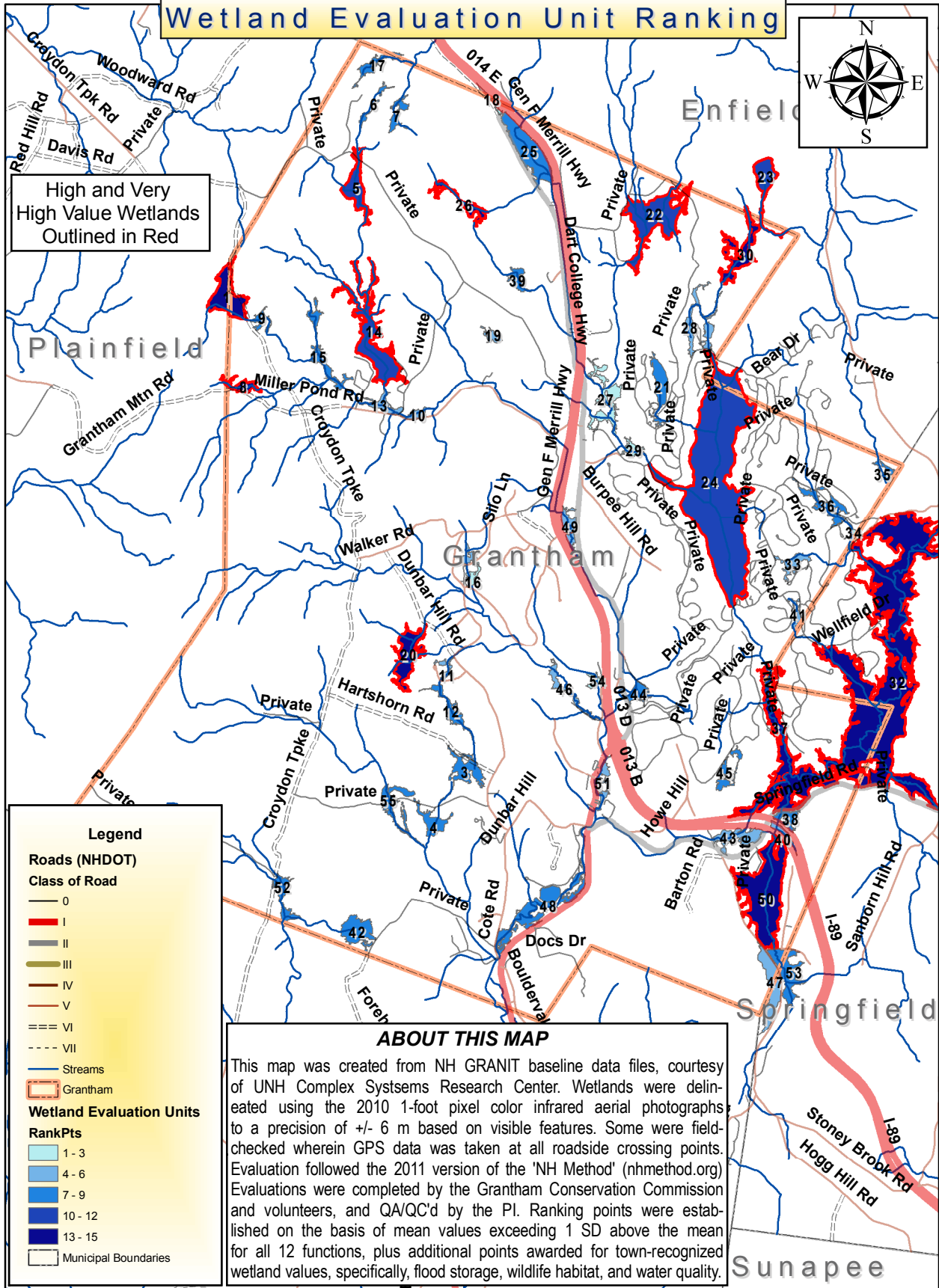


Grantham Wetland Inventory & Assessment Project

Wetland Evaluation Unit Ranking



High and Very High Value Wetlands Outlined in Red

Legend

Roads (NHDOT)
Class of Road

- 0
- I
- II
- III
- IV
- V
- VI
- VII

Streams

Grantham

Wetland Evaluation Units
RankPts

- 1 - 3
- 4 - 6
- 7 - 9
- 10 - 12
- 13 - 15

Municipal Boundaries

ABOUT THIS MAP

This map was created from NH GRANIT baseline data files, courtesy of UNH Complex Systems Research Center. Wetlands were delineated using the 2010 1-foot pixel color infrared aerial photographs to a precision of +/- 6 m based on visible features. Some were field-checked wherein GPS data was taken at all roadside crossing points. Evaluation followed the 2011 version of the 'NH Method' (nhmethod.org). Evaluations were completed by the Grantham Conservation Commission and volunteers, and QA/QC'd by the PI. Ranking points were established on the basis of mean values exceeding 1 SD above the mean for all 12 functions, plus additional points awarded for town-recognized wetland values, specifically, flood storage, wildlife habitat, and water quality.



1:67,500